



GT

VG45  
VG56  
VG67  
VG79  
VG11

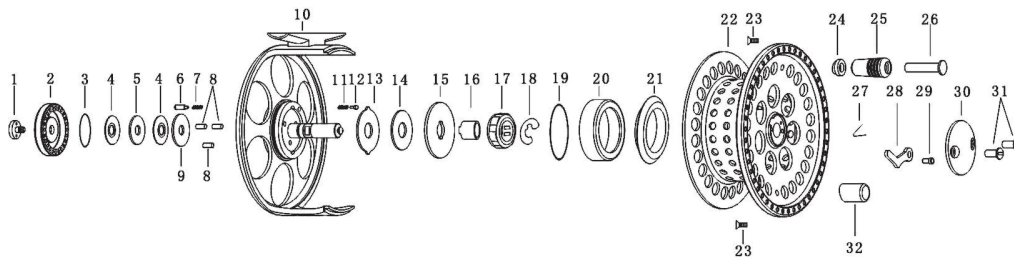
**OWNERS MANUAL**

**Changing from left hand retrieve to right hand retrieve.**

1. Release the brake, VERY IMPORTANT!
2. With the point of a small screwdriver in one of the slots in (18) the E-clip, you lever it gently to the side.
3. Pull out (17) the one way bearing – turn it over and put it back again.
4. Push (18) the E-clip in place again. You just place it in position to the groove in the main shaft and push it in position again. You can use the screwdriver for this. If the E-clip is difficult to position back to the groove, you have probably forgotten to release the brake.

**Reel maintenance**

Rinse the reel after saltwater use.  
Keep the reel clean.  
Add waterproof grease/oil to your reel's moving parts (especially to the one way bearing, part 17) once a year.



KEY NO.	PARTS NAME	KEY NO.	PARTS NAME	KEY NO.	PARTS NAME
1	SCREW (DRAG KNOB)	12	CLICK PIN	23	SCREW
2	DRAG KNOB	13	WASHER	24	HANDLE KNOB WASHER
3	O-RING	14	WASHER	25	HANDLE KNOB
4	WASHER	15	DRAG PLATE	26	HANDLE RIVET
5	WASHER	16	SLEEVE	27	SPING (RETAINER)
6	CLICK PIN	17	ONE WAY BEARING	28	RETAINER
7	CLICK SPRING	18	E-CLIP	29	RETAINER PIN
8	PUSH PIN	19	O-RING	30	RETAINER COVER
9	WASHER	20	DRAG COVER	31	SCREW
10	FRAME ASSY.	21	V-RING	32	BALANCE
11	CLICK SPRING	22	SPOOL		

Vision Group Ltd  
Oppipojantie 10  
04500 Kellokoski  
Finland  
358 (0)9 2797 610  
service@visiongroup.fi

For service centers visit:  
[www.visionflyfishing.com](http://www.visionflyfishing.com)