

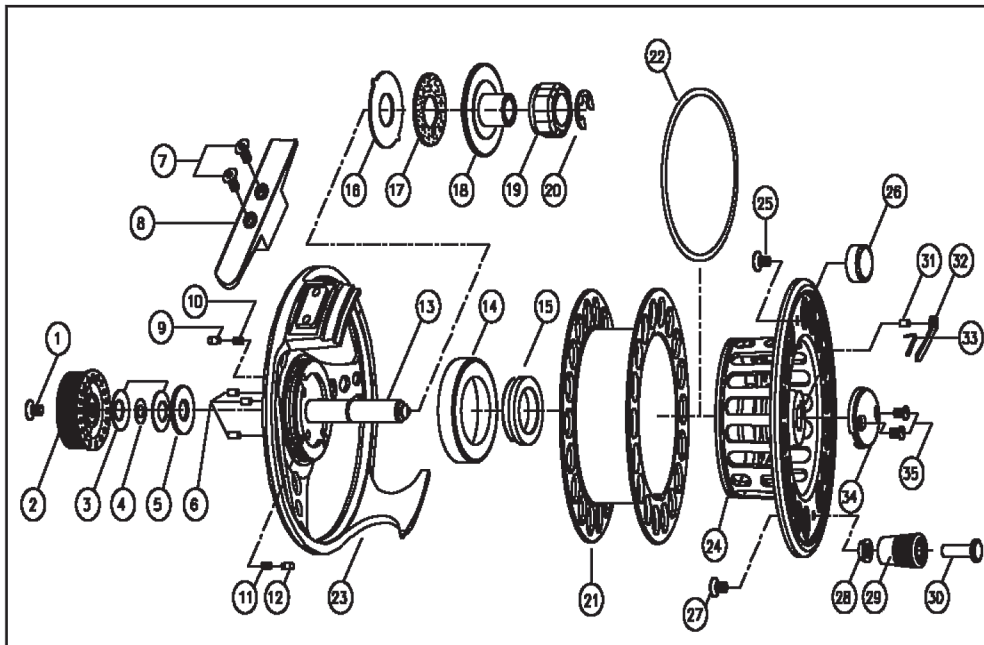


**KOMA Kasette
VKC78**

OWNERS MANUAL

Changing from left hand retrieve to right hand retrieve.

1. Release the brake **VERY IMPORTANT**
2. With the point of a small screwdriver in one of the slots in (20) the E-clip, you lever it gently to the side.
3. Pull out (19) the one way bearing – turn it over and put it back again
4. Push (20) the E-clip in place again. You just place it in position to the groove in the main shaft and push it in position again. You can use the screwdriver for this.



NO	PART NAME	NO	PART NAME	NO	PART NAME	NO	PART NAME
1	DRAG KNOB SCREW	10	SPRING(D/KNOB)	19	O/WAY BEARING	28	RING (HANDLE KNOB)
2	DRAG KNOB	11	SPRING(FRAME)	20	E-CLIP	29	HANDLE KNOB
3	SPRING WASHER	12	CLICK PIN(FRAME)	21	CASEETEE	30	HANDLE RIVET
4	O-RING	13	MAIN SHAFT	22	O-RING	31	RETAINER PIN
5	DRAG WASHER	14	BRAKE CAP	23	FRAME ASS'Y	32	RETAINER
6	PUSH PIN	15	V-RING	24	SPOOL ASS'Y	33	SPRING(RETAINER)
7	SCREW(FOOT)	16	DRAG WASHER "A"	25	SCREW(BALANCE)	34	RETAINER COVER
8	FOOT	17	CORK WASHER	26	BALANCE	35	SCREW(RETAINER COVER)
9	CLICK PIN(D/KNOB)	18	DRAG PLATE	27	SCREW(H/RIVET)		

Vision Group Ltd
Niinistökatu 1
05800 Hyvinkää
Finland
358 (0)9 2797 610
service@visiongroup.fi

For service centers visit:
www.visionflyfishing.com