



XLA Antireverse
VLX57L
VLX57R
VLX89L
VLX89R
VLX11L
VLX11R

OWNERS MANUAL

XLA Antireverse

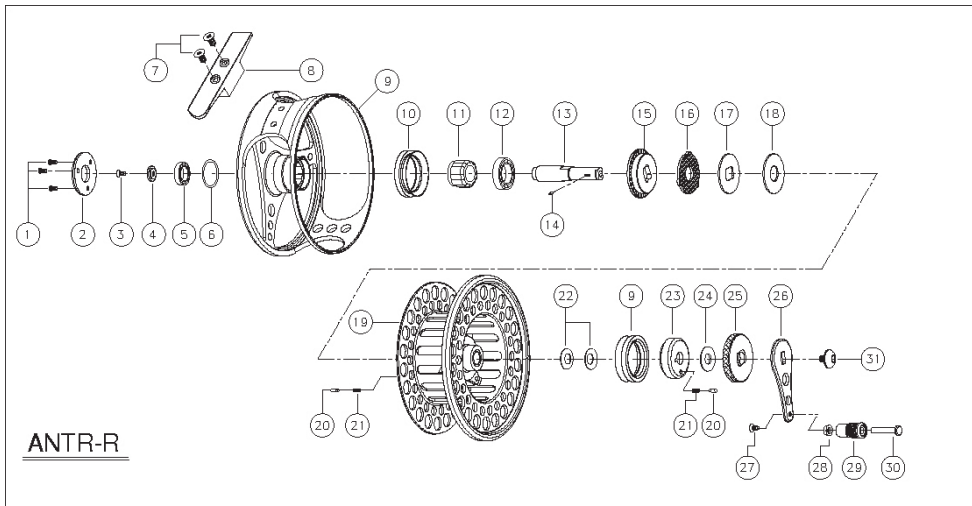
Thank you for choosing a Vision product!

This reel is left or right hand retrieve and can not be altered by the customer himself. Do not dismantle your reel yourself; take it to the flyshop or to one of the service centers below.

Reel maintenance

Rinse the reel after saltwater use.

Keep the reel clean.



| NO | PART NAME | NO | PART NAME | NO | PART NAME | NO | PART NAME |
|----|-------------------|----|-----------------|----|--------------------|----|------------------|
| 1 | FRAME COVER SCREW | 10 | V-RING | 19 | SPDOL | 26 | RETAINER PIN |
| 2 | FRAME COVER | 11 | O/WAY BEARING | 20 | CLICK PIN | 29 | HANDLE KNOB |
| 3 | MAIN SHAFT SCREW | 12 | BALL BEARING | 21 | CLICK PIN SPRING | 30 | HANDLE RIVET |
| 4 | CDLLAR | 13 | MAIN SHAFT | 22 | SPRING WASHER | 31 | HANDLE ARM SCREW |
| 5 | BALL BEARING | 14 | STOP PIN | 23 | SPRING COVER | | |
| 6 | O-RING | 15 | PLATE | 24 | WASHER | | |
| 7 | SCREW(FD0T) | 16 | CARBON WASHER | 25 | DRAG KNDB | | |
| 8 | FD0T | 17 | DRAG WASHER "D" | 26 | HANDLE ARM | | |
| 9 | FRAME | 18 | TEFRON WASHER | 27 | HANDLE RIVET SCREW | | |

Vision Group Ltd
 Oppipojantie 10
 04500 Kellokoski
 Finland
 358 (0)9 2797 610

For service centers visit:
www.visionflyfishing.com

service@visiongroup.fi